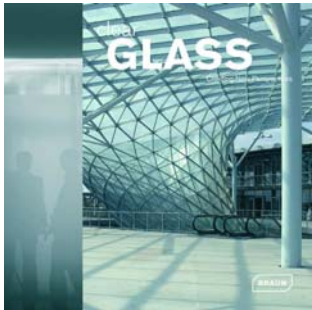


Project "Treetop Apartments" / publication in "Clear Glass", Verlagshaus Braun, 2008



**Treetop Apartments, 2002**  
Address: Herihastrasse 18, Hanover Kirchrode, Germany. Glass engineers: Burmester + Sellmann. Client: Jürgen Erdmann. Gross floor area: 1,130 m<sup>2</sup>. Materials: steel, glass covering wood.

### Men in trees

ARCHITECTS: Despang Architekten



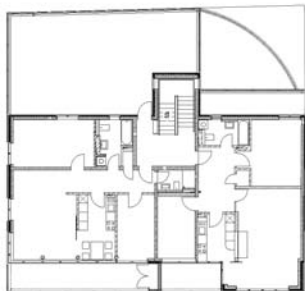
The residential and commercial building is an urban equivalent of living in a treetop. It achieves this by imitating the airy and light-filled setting found between the branches by alternating wood and glass and opening itself up to the existing street greenery and the sun. The wooden balcony boxes act to create acoustic privacy from the neighbors and gather the maximum amount of light. Glass layers in front of wood facing create an energy-thermal buffer and simultaneously protect the material from the effects of weathering and vandalism. The building is dematerialized by its glass envelope and thanks to its reflective properties becomes a part of the neighborhood and the urban greenery.



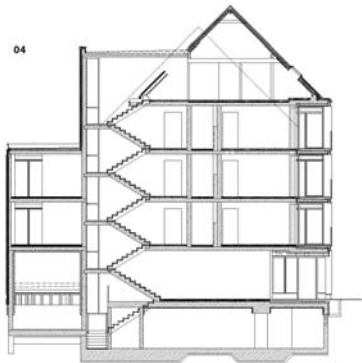
04



04



04



01 Front view 02 Balcony 03 View from the street 04 Second floor plan 05 Third floor plan 06 Cross section 07 Outside view 08 Interior view

