

Project "Coffeetime" / publication in "Pure Plastics", Verlagshaus Braun, 2008



6 Preface

POLYGONAL

- 10 **Fukusaki Hanging Garden**  
Kengo Kuma & Associates
- 14 **Blur Business Hotel and Cultural Facility**  
Studio Pei-Zhu
- 18 **Classroom center Freie Universität Berlin, cafeteria II**  
Carola Schäfers Architekten BDA
- 22 **Head office enlargement Ili Luce**  
UJA
- 26 **Casa GA**  
graciastudio
- 30 **Xing Restaurant**  
LTL Architects
- 32 **Wood materials engineering laboratories, annex building**  
Robert Barnstone
- 36 **Loft in PLUS5**  
Daniele Claudio Taddei Architect
- 40 **Administrative Building BB Center reception**  
Ivan Kroupa architekti
- 42 **Parts House Open-Air Entertainment Pavilion**  
Johnsen Schmaling Architects
- 46 **Art and Culture House Brasília**  
Fischer Art
- 50 **Two-family house**  
pfeifer roser kuhn architekten
- 54 **Center for continuing education and culture SÜD**  
kuntz+manz architekten
- 58 **Production and assembly hall Behr Co.**  
Becker Architekten with Reiner Kriebhan
- 62 **Center for group dynamics and institutional analyses (CDGAI)**  
Dethier & Associés
- 66 **L.A. Design Center – Furniture showroom and exterior public events space**  
John Friedman and Alice Kimm Architects

70 **Sports and culture center Crystal**  
b&b+ Arno Brandhuber, Dorte Mandrup Arkitekter

74 **Single-family house in Zdarky**  
ARCHTEAM

78 **New Camp Nou Stadium for FC Barcelona**  
Foster + Partners

84 **Visitor walkway Voestalpine**  
Caramel Architekten with E. Stjper

88 **Restaurant, cocktail bar and club the Mansion**  
Concrete Architectural Associates

90 **dv atelier**  
deffner volländer architekten

94 **Residential, office and kindergarten**  
MULTIFUNK®  
ANA architecten

98 **Children's Nursery on the Green**  
Cottrell & Vermeulen

102 **Plastic house**  
Kengo Kuma & Associates

106 **Temporary exhibition pavilions Mobile Museums**  
Gruber + Popp Architekten BDA  
with Hans Jörg Wegner

110 **Urban Structure Museum (K-Museum)**  
Makoto Sei Watanabe

114 **Extension for the Schwarzenbergstraße Special Education School**  
Niemann Architekten

116 **Junky Hotel**  
Bararchitects

120 **Department store, spa and corporate headquarters, Armani / Ginza Tower**  
Massimiliano Fuksas and Doriana Mandrelli

124 **Museum Plagiarius**  
Angelis Reinhard Architekturbüro

CURVATURE

130 **Office NTT International**  
Fritz Gampo, Dié en Bonazzi Architekten

136 **Museum Kunsthau Graz**  
Spacelab – Peter Cook, Colin Fournier

140 **Air Traffic Control Center with control tower**  
Zechner & Zechner

144 **Front end D tower**  
NOX / Lars Spjibybeek with Q. S. Serafinj

146 **Trade fair pavilion Dynaform**  
Franken-Architekten

150 **Het nieuwe Stedelijk Museum**  
Berthom Crouwel Architekten BV Ima

154 **Kreipe's coffeeshop lounge**  
Despang Architekten

158 **Bizarre Boutique**  
Randy Brown Architects

162 **Public space city lounge St. Gallen**  
Carlos Martinez and Pipiotti Rist

166 **Caravan Adria Action**  
Reino, Nina Mihovec

170 **Hydra saltwater pavilion**  
ONL [Oosterhuis, Lénárd]

174 **Office and presentation building, terminal V**  
Hugo Dworak

178 **Bus station "The Amazing Whale Jaw"**  
NIO Architekten

182 **Heat Transfer Station Nr. 8 Zero emission**  
NL Architects

186 **Restaurant Georges**  
JAKOB + MACFARLANE

188 **Khan Shatry Entertainment Center**  
Foster + Partners

190 **MANDARINI! Mandarin Duck Agency shop**  
Studio X Design Group (STX): Rettondi+Brito

194 **Ideal houses**  
Zaha Hadid Architects

198 **Temporary Museum**  
Graft

200 **Piece of furniture, place of seclusion,**  
AVL Workskull  
Atelier Van Lieshout

202 **Fair stand for EgoKiefer Windows and Doors**  
Carlos Martinez Architekten

204 **BioWallE**  
Greg Lynn Form

HYPER

210 **Experimental construction CORPFORM**  
FORMDRP  
(Marco Hemmerling, Markus Holzbach)

214 **Tea Room: Tee Haus**  
Kengo Kuma & Associates

218 **Art project, temporary installation Comfort #3**  
Lang / Baumann

220 **INSTANT eGO**  
nomadic personal space  
PoD architecture

224 **Temporary passage at the International Contemporary Furniture Fair**  
Lyn Rice / OpenOffice

228 **Luminarium Levity II**  
Alan Parkinson

232 **United Bamboo clothing store**  
Accoro Studio

236 **United Bottle**  
INSTANT Architects

240 **Redesign and roofing of Urban-Lortz-Platz**  
Architekten Tiller & Willinger

244 **Mobile exhibition pavilion Info Pneu 2 (IP2)**  
LOSDJKOB (Mohamed Fozazi, Volker Hofmann, Antonio Pinca)

248 **Ready to plug in "Instant Home – Resident Alien"**  
Valeska Paschke

250 **Architects Index**

256 **Picture Credits**

#### Kreipe's coffeeshop lounge, 2004

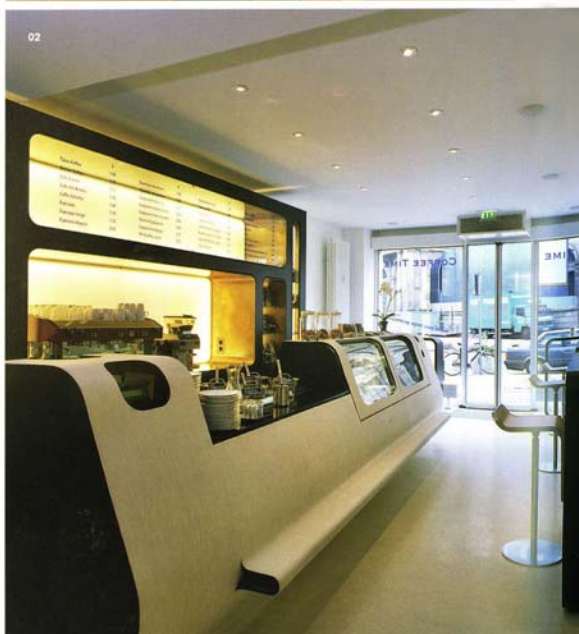
**Address:** Rathenaustraße 12, Hanover, Germany. **Client:** Konditorei Kreipe GmbH / Jan Fleissig. **Gross floor area:** 250 m<sup>2</sup>. **Materials:** black medium density fiberboard, DLW-Vinyl polyvinyl chloride (PVC, "vinyl"), woven polyvinyl chloride (PVC, "vinyl").

#### Vinyl cremissimo

ARCHITECTS: Despang Architekten

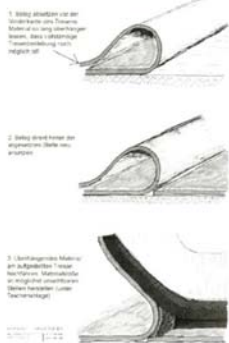


The traditional coffee shop commissioned a branch to be built specifically for a new target group. On the ground floor, linear decorative elements guide the guest inside the space. Seating and counters are not free-standing, but emerge smoothly, complete with all their components from the light-colored plastic that makes up the floor. This allows their mass to dissolve, and lets the forms define the space. The furniture is covered with a 2 mm-thick crème vinyl layer. This is DLW Solid, which is the coating covering all faces. Authentic materials that display their composition on open surfaces are the basic elements of the design concept. Pre-patinated, banded brass elements were employed on tables and the buffet, transporting the coffeehouse tradition into the modern age. The sensual harmony arising from the combination of plastic and brass is a reference to the Copenhagen Airport Terminal designed by Vilhelm Lauritzen (1935). The vinyl used on the ground floor, with its smooth, hard surface is a perfect match for the quick coffee experience. On the upper floor it is replaced with a woven texture reminiscent of textile that covers the floor, seating and the first two meters of the lounge ceiling, formulating the space here as well.



PVC-Verklebung Übergang  
Fußboden - Treppen

04



05

01 Detail bar 02 Buffet 03 Lounge  
on the upper floor 04 Detail floor  
construction 05 Detail 06 Ground  
floor plan 07 Seating and counters  
in the entrance area

06

