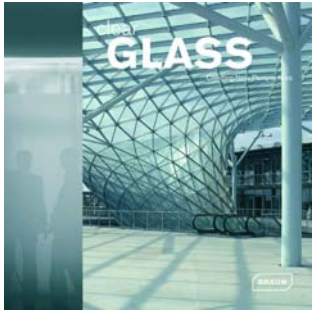


Project "Heimbs Flagship Store" / publication in "Clear Glass", Verlagshaus Braun, 2008



Heimbs Coffeeroaster Flagship Store, 2007
Address: Bohlweg / Damm Schlossarkaden Braunschweig, Germany. Glass engineer: Fa OKALUX.
Structural engineers: Drewes + Speth. Light planning: Fablike & Detmer Licht in der Architektur.
Client: Heimbs Kaffee GmbH & Co. KG. Gross floor area: 183 m². Materials: Coffee beans on a bed of silicone inside insulated glass OKA-X.

A glass of Coffee

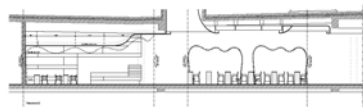
ARCHITECTS: Despang Architekten



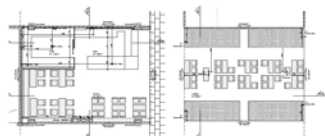
Heimbs, who have been in the coffee roasting business for over 125 years, present themselves to the awaiting public for the first time in the Braunschweiger Castle, which has been recently reopened as a mall. In contrast to the representation of coffee that has been mediated by pop culture and post modernism, here the bean is presented in an opulent mantle and in its fullness. The counters and the space itself are transformed into coffee chutes and the guest is surrounded by the origins of the drink's flavor as it enjoys the product. To simulate the process of roasting using red/orange/yellow light, OKALUX, the world market leader in custom insulated glass paneling developed a unique solution, whereby the beans were placed inside a bed of white silicon.



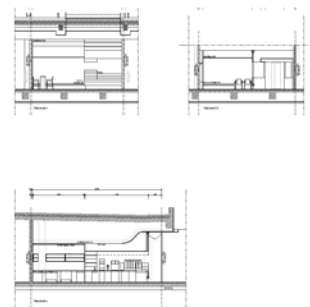
04



05



06



01 Detail 02 Bar 03 Front view into the store 04 Section 05 Ground plans 06 Sections 07 Reflection to the outside 08 Detail coffee beans

