

CYBERCAFES

SURFING INTERIORS

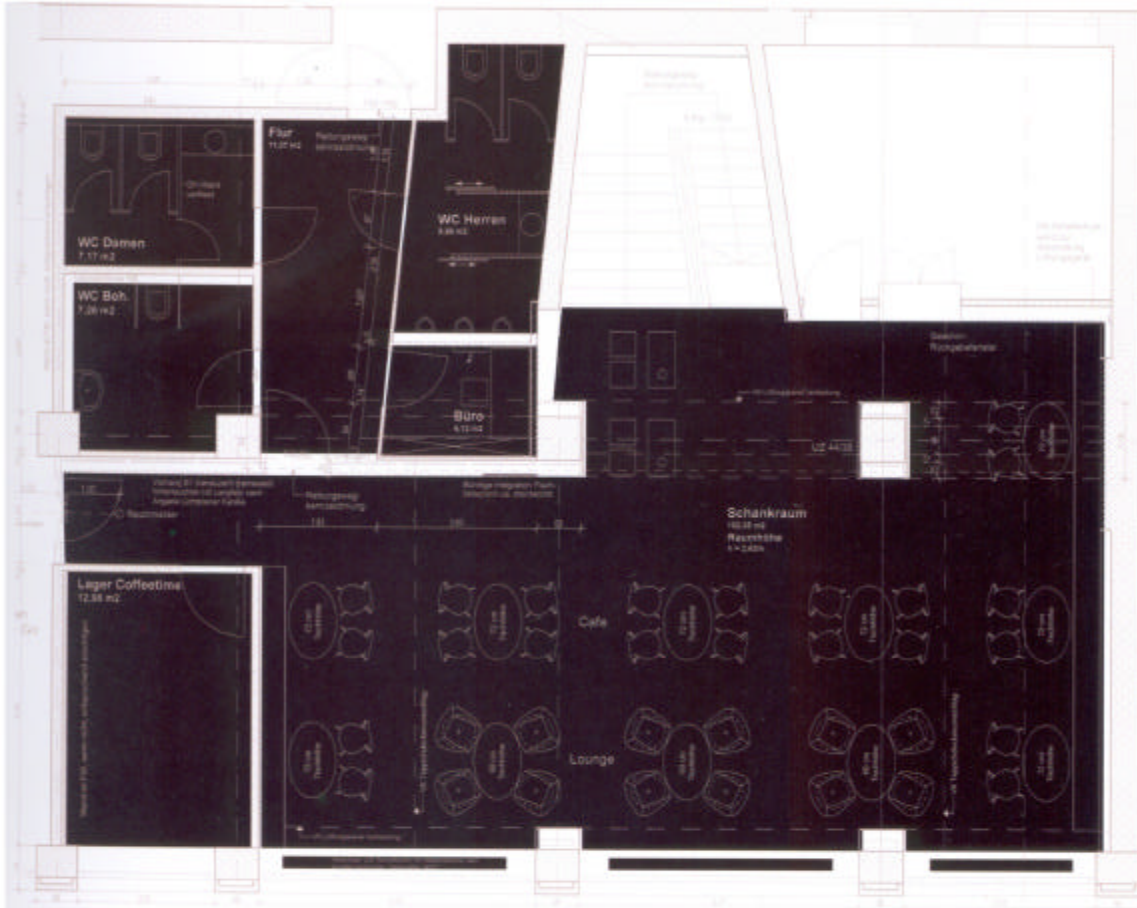




KREIPE'S COFEETIME

Despang Architekten

Hannover, Germany / Photos © Joachim Giesel, Olaf Baumann



First floor





Tradition and modernity merge with the new location of the legendary Kreipe's House, a cafeteria-pastry shop which since 1873 had been established in Bahnhofstrasse. In an effort to attract a younger clientele they recently decided to relocate and modernize the celebrated café. The building materials of the ground floor are principally metal and plastic vinyl and this area houses a bar, with stools, benches and shaped tables from where to enjoy a quick snack at street level.

On the large upper floor there are oval shaped tables with Arne Jacobsen chairs and Walter Knoll armchairs where the client can connect to internet by way of laptop whilst enjoying views over the city opera house through a panoramic 43 ft window. Wi-Fi is available throughout the premises.



The lounge located on the first floor offers all types of comforts for connecting via Wi-Fi. This room draws great inspiration from the spaces designed by Jacobsen in the Royal Hotel and in the HQ of the air company SAS in Copenhagen.



The bar and the other facilities for the customers on the ground floor mirror the modernist legacy of the design of the premises.

