

ARCH 410 [4 th year undergraduate] Fall 07 : College of Public Health / University of Nebraska USA

The task was to facilitate academic and scholarly research in public health for the recently established college on the UNO campus. The courses focus being tectonics, respectively how to put things together, the studio investigated in how a building should be pragmatically and poetically structured and composed in order to stimulate the researchers to work on this societal relevance of highest priority. The designers found out that healthy environmentally correct building components are not enough to create an institution of such scope, but that it needs the poetic virtuosity of the designer to compose these elements in a simultaneously archi- and ecofriendly way in order to create an institution that lives what it researches, teaches and preaches.

Warming up exercise: bus stops:

Emily Ratzlaff:



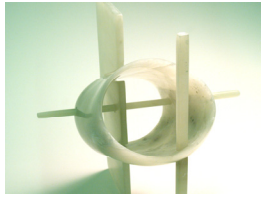
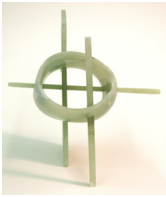
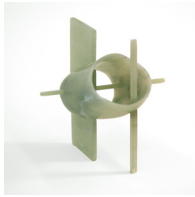
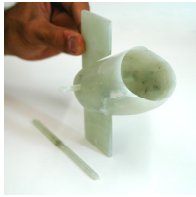
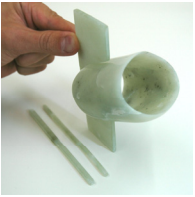
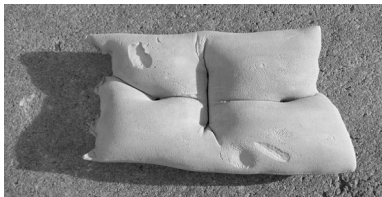
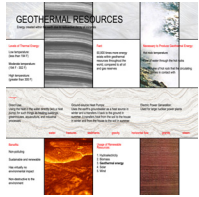
Whitney Polt:



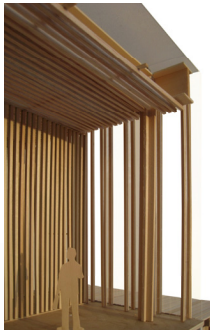
Yaravi Lopez-Wilson



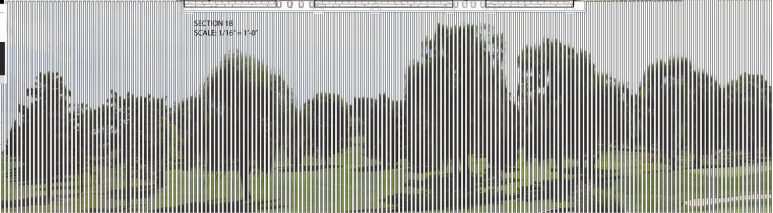
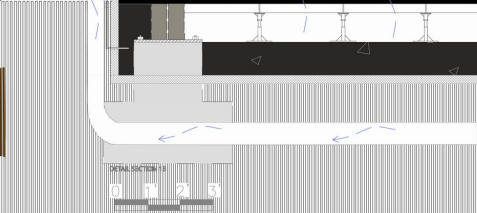
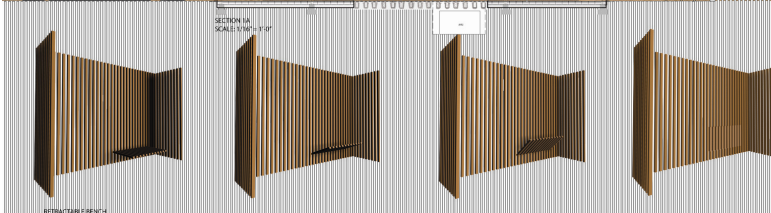
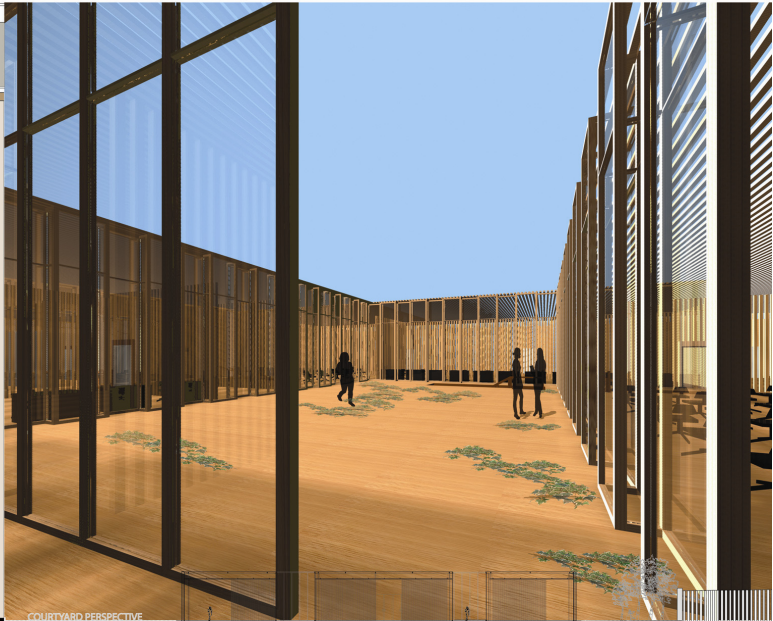
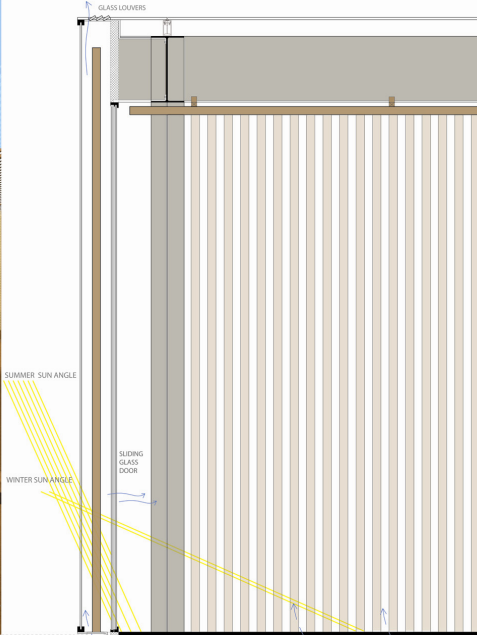
research physical, psychological and materialized heath perception:



College of Public Health: Whitney Pott



WHITNEY POTT . PROFESSOR DESPANO . DECEMBER 12, 2007



College of Public Health: Emily Ratzlaff

